

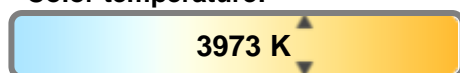
#### Light efficiency:



#### Light quality:



#### Color temperature:

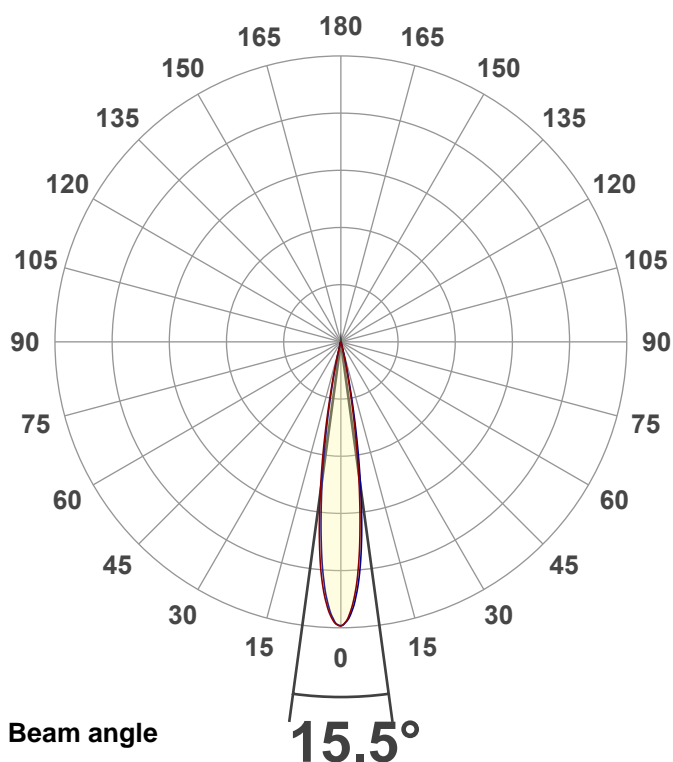


**Output:** 3912 lm  
**Peak:** 57002 cd  
**Power:** 225.7 W  
**PF:** 1.0



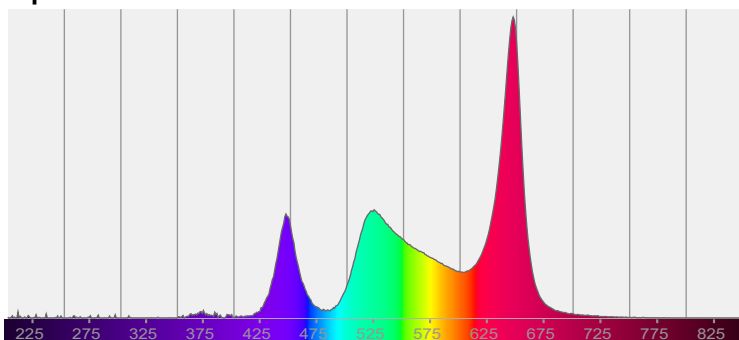
**Product name:**  
**Vizi Pix Z19 (Zoom 50%,4000K)**  
**Item number:**

**Date and time:**  
**5/4/2026 9:42:38 AM**

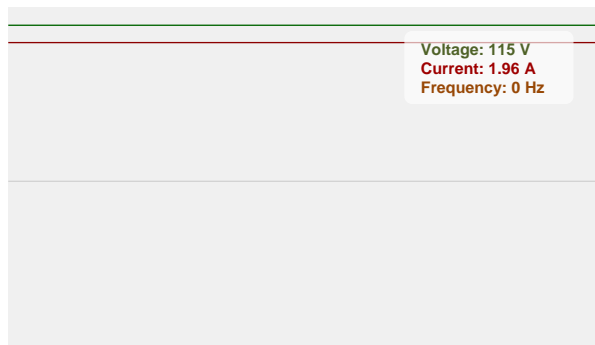


CIE 1931  
x: 0.385  
y: 0.389

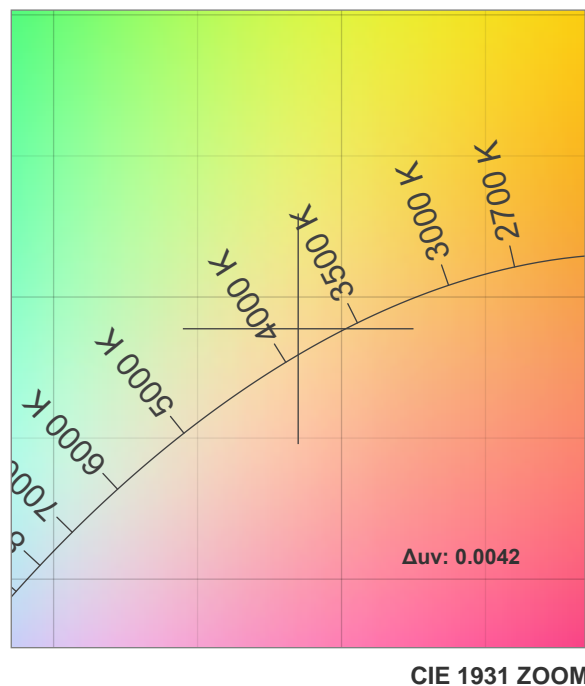
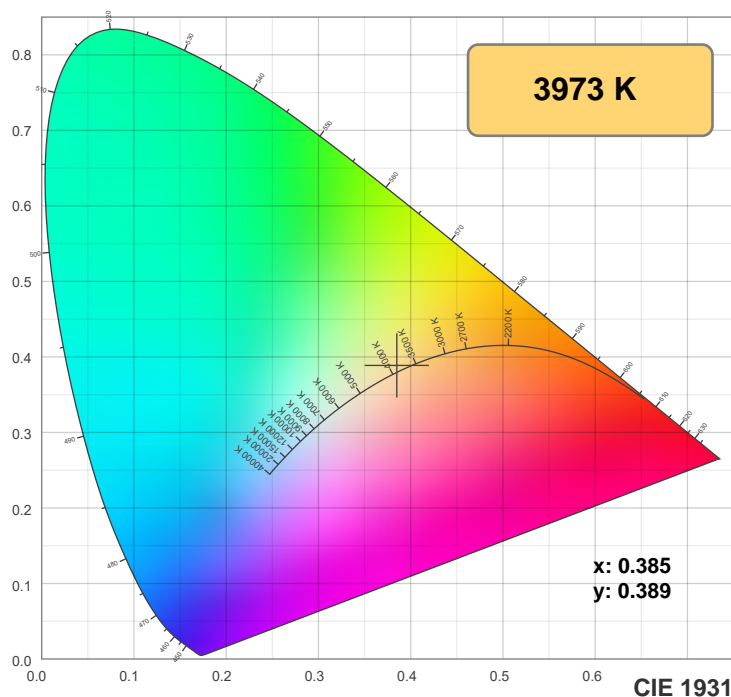
#### Spectra



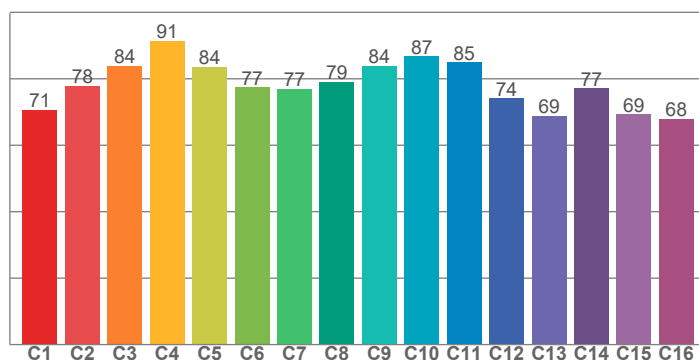
#### Power



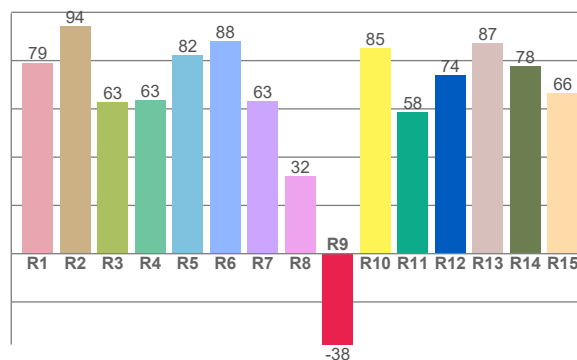
## Color details



**TM-30: 79.2**



**CRI: 70.6 (R1-R8)**



CRI R values, only R1-R8 are used to calculate final CRI value

R1	R2	R3	R4	R5	R6	R7	R8	R9	R10	R11	R12	R13	R14	R15
79.1	94.3	62.6	63.4	82.3	88.0	63.3	32.2	-37.7	85.1	58.5	73.8	87.2	77.7	66.4

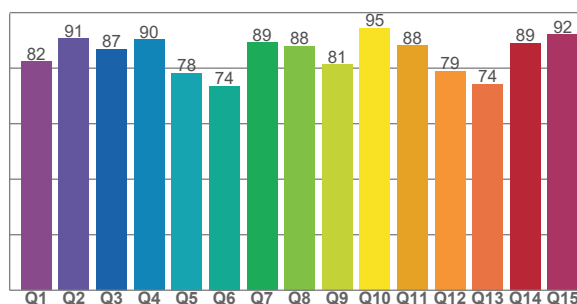
TM30 C values, 16 binned values out of total of 99 C values

C1	C2	C3	C4	C5	C6	C7	C8	C9	C10	C11	C12	C13	C14	C15	C16
70.7	77.9	83.8	91.5	83.6	77.4	77.0	79.2	83.8	86.8	84.9	74.2	68.8	77.1	69.3	68.0

CQS Q values

Q1	Q2	Q3	Q4	Q5	Q6	Q7	Q8	Q9	Q10	Q11	Q12	Q13	Q14	Q15
82.3	90.7	86.9	90.4	78.2	73.5	89.2	87.9	81.4	94.5	88.1	78.9	74.3	89.0	92.1

**CQS: 83.9**



### Color parameters

Color temperature	Color rendering index	Red component	Color fidelity	Color gamut	Color quality scale	Color coordinate cie 1931	Color coordinate cie 1931	Color coordinate	Color coordinate	Color deviation from black body
CCT	CRI	CRI R9	TM30 Rf	TM30 Rg	CQS	x	y	u	v	Δuv
3973 K	70.6	-37.7	79.2	116.2	83.9	0.385	0.389	0.223	0.338	0.0042

# TM-30 details

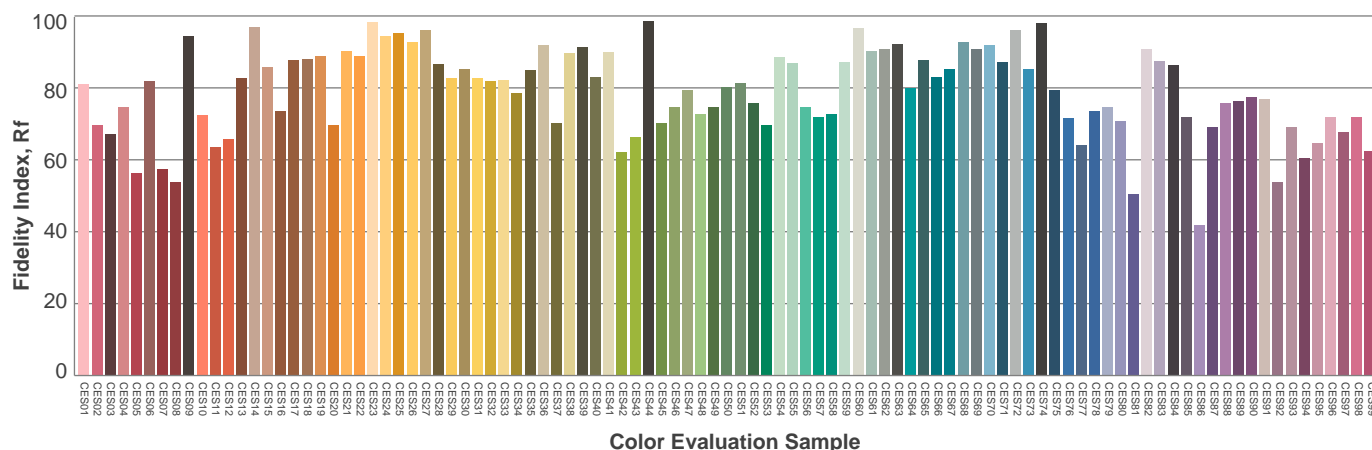
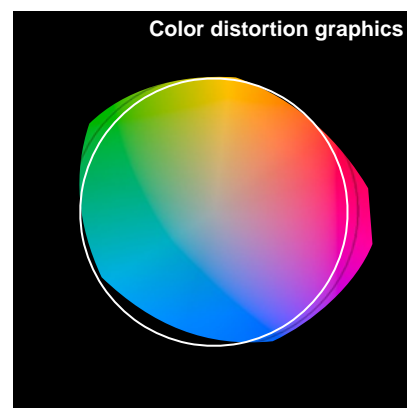
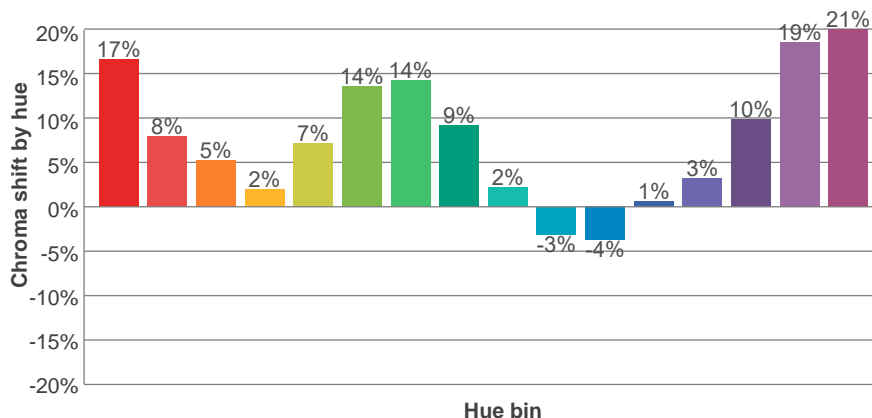
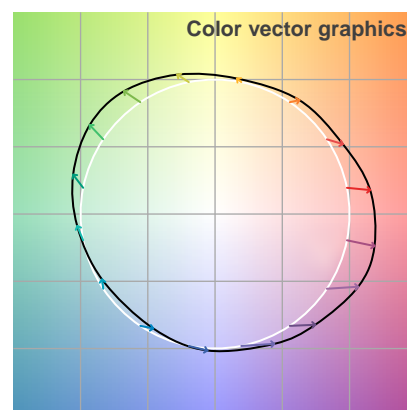
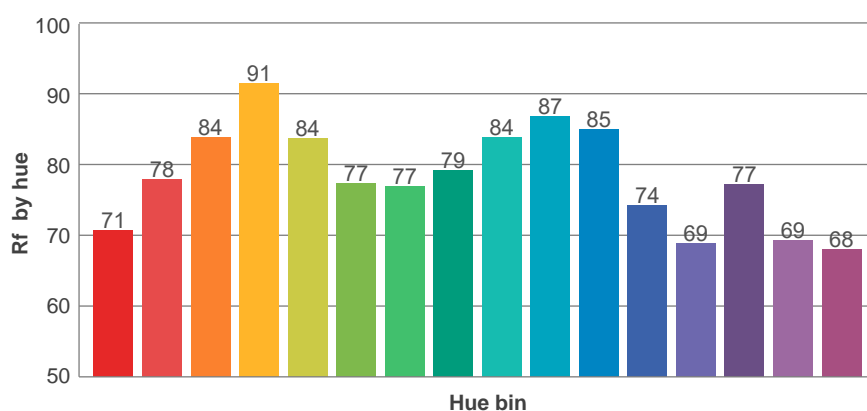
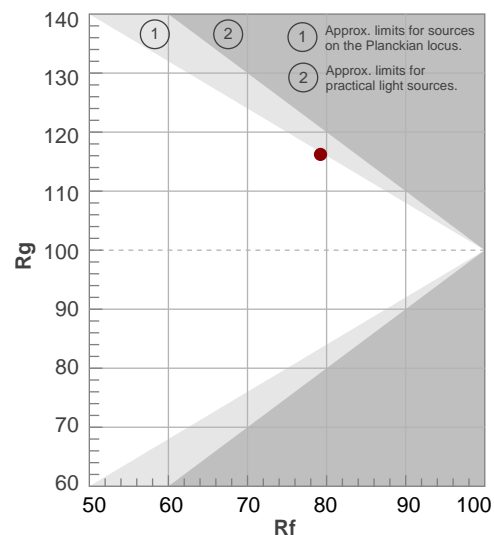
**Rf 79.2**

Fidelity index Rf

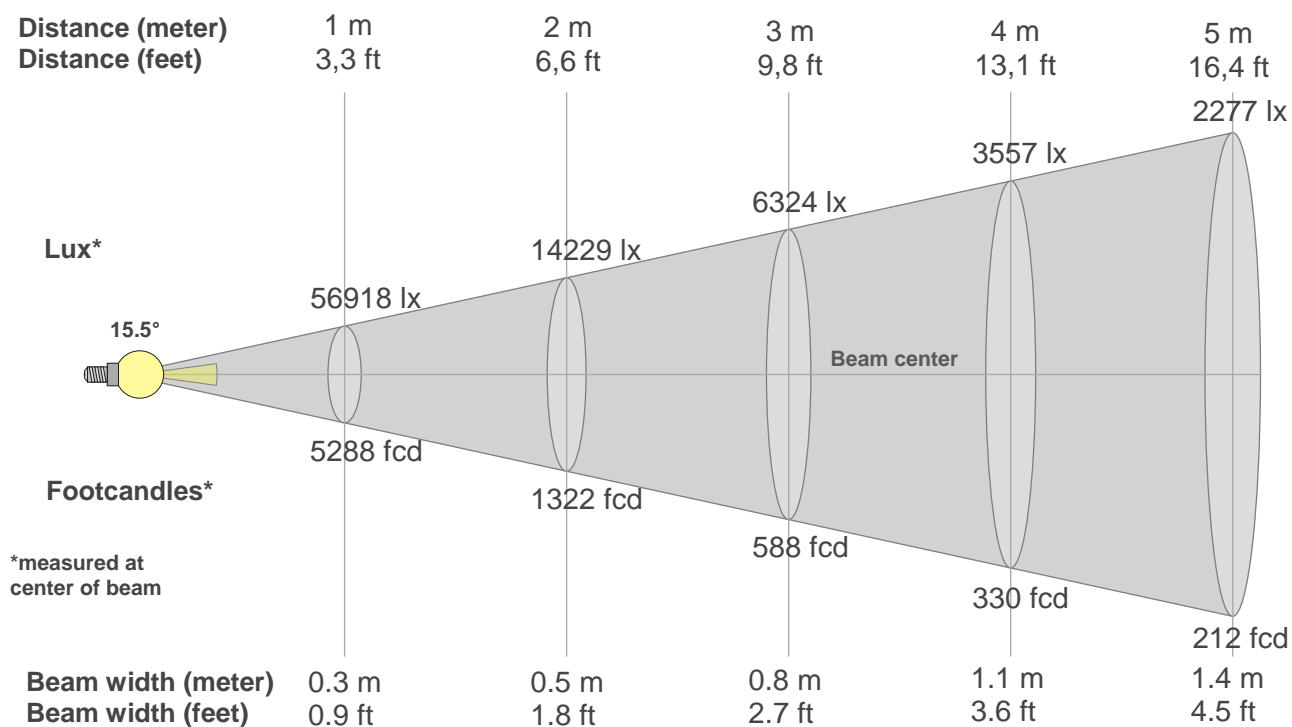
**Rg 116.2**

Gamut index Rg

Hue Bin	Ri	Shifts (%)	
		Chroma	Hue
1	71	17%	-5%
2	78	8%	-10%
3	84	5%	-5%
4	91	2%	4%
5	84	7%	7%
6	77	14%	6%
7	77	14%	-3%
8	79	9%	-8%
9	84	2%	-11%
10	87	-3%	-6%
11	85	-4%	9%
12	74	1%	14%
13	69	3%	24%
14	77	10%	16%
15	69	19%	14%
16	68	21%	0%



## Beam details



### Beam intensities from 1-20m

1m	2m	3m	4m	5m	6m	7m	8m	9m	10m	11m	12m	13m	14m	15m	16m	17m	18m	19m	20m
3.3ft	6.6ft	9.8ft	13.1ft	16.4ft	19.7ft	23ft	26.2ft	29.5ft	32.8ft	36.1ft	39.4ft	42.7ft	45.9ft	49.2ft	52.5ft	55.8ft	59.1ft	62.3ft	65.6ft
56918lx	14229lx	6324lx	3557lx	2277lx	1581lx	1162lx	889lx	703lx	569lx	470lx	395lx	337lx	290lx	253lx	222lx	197lx	176lx	158lx	142lx
5287.8fcd	1322fcd	587.5fcd	330.5fcd	211.5fcd	146.9fcd	107.9fcd	82.6fcd	65.3fcd	52.9fcd	43.7fcd	36.7fcd	31.3fcd	27fcd	23.5fcd	20.7fcd	18.3fcd	16.3fcd	14.6fcd	13.2fcd

### Intensities in 0° c-plane

0°	1°	2°	3°	4°	5°	6°	7°	8°	9°	10°	11°	12°	13°	14°	15°	16°	17°	18°	19°
56.9k	56.1k	54.2k	51.3k	47.4k	42.5k	36.7k	30.7k	24.6k	18.7k	13.3k	8.8k	5.5k	3.2k	1.6k	0.6k	0.1k	0.0k	0.0k	0.0k
100%	99%	95%	90%	83%	75%	65%	54%	43%	33%	23%	16%	10%	6%	3%	1%	0%	0%	0%	0%

### Intensities in 90° c-plane

0°	1°	2°	3°	4°	5°	6°	7°	8°	9°	10°	11°	12°	13°	14°	15°	16°	17°	18°	19°
56.9k	56.2k	54.8k	52.4k	49.1k	44.9k	39.8k	34.0k	27.8k	21.8k	16.1k	11.0k	7.0k	4.2k	2.2k	1.0k	0.3k	0.0k	0.0k	0.0k
100%	99%	96%	92%	86%	79%	70%	60%	49%	38%	28%	19%	12%	7%	4%	2%	0%	0%	0%	0%

### Intensities in 180° c-plane

0°	1°	2°	3°	4°	5°	6°	7°	8°	9°	10°	11°	12°	13°	14°	15°	16°	17°	18°	19°
56.9k	56.6k	55.2k	53.0k	50.0k	46.0k	40.9k	35.2k	29.1k	23.1k	17.1k	11.9k	7.7k	4.7k	2.6k	1.2k	0.3k	0.1k	0.0k	0.0k
100%	99%	97%	93%	88%	81%	72%	62%	51%	41%	30%	21%	14%	8%	4%	2%	1%	0%	0%	0%

### Intensities in 270° c-plane

0°	1°	2°	3°	4°	5°	6°	7°	8°	9°	10°	11°	12°	13°	14°	15°	16°	17°	18°	19°
56.9k	56.4k	54.8k	52.0k	48.3k	43.6k	38.0k	32.0k	25.9k	19.9k	14.2k	9.7k	6.1k	3.6k	1.8k	0.7k	0.1k	0.1k	0.0k	0.0k
100%	99%	96%	91%	85%	77%	67%	56%	46%	35%	25%	17%	11%	6%	3%	1%	0%	0%	0%	0%

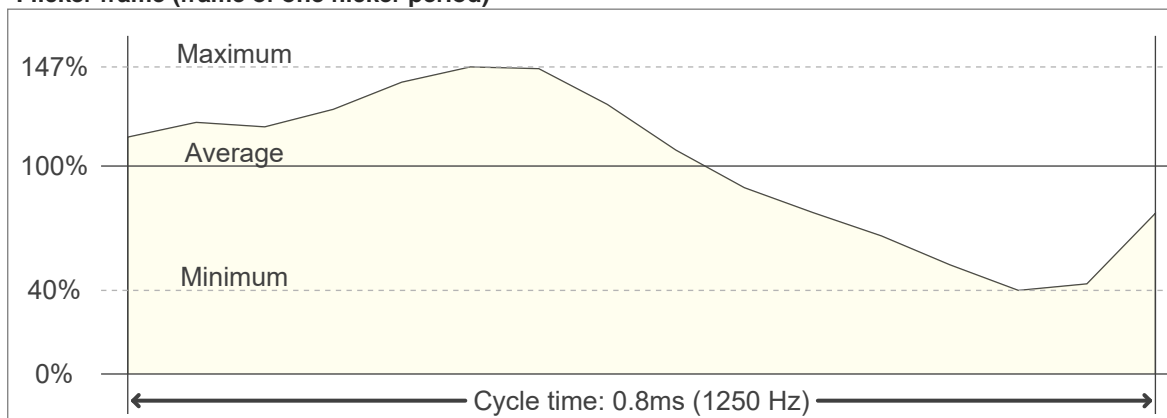
Beam angle 50%	Field angle 10%	Cutoff angle 2,5%	Intensity ratio in 120° cone	Intensity ratio in 90° cone
15.5°	24.5°	28.9°	100.0%	100.0%

# Flicker

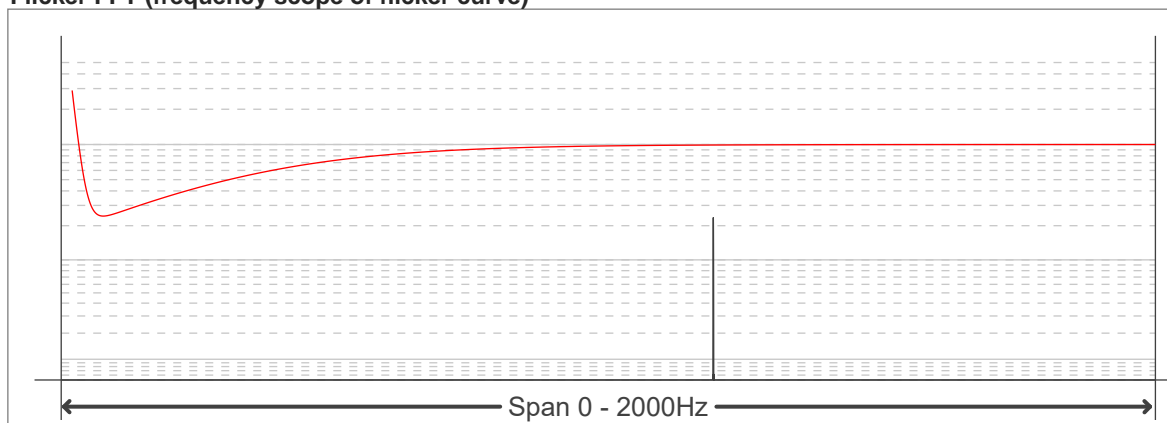
**Flicker curve (complete sampled flicker signal)**



**Flicker frame (frame of one flicker period)**



**Flicker FFT (frequency scope of flicker curve)**



**Flicker results:**

Flicker frequency:		1250 Hz	
Flicker index:	0.16	JA8/10 40Hz	0.15 %
Flicker percentage:	61.22 %	JA8/10 90Hz	0.28 %
SVM: (Visual flicker)	0.48	JA8/10 200Hz	0.62 %
PstLM	0	JA8/10 400Hz	1.38 %
Mp	0.07	JA8/10 1000Hz	8.39 %

**Flicker conditions:**

Sample rate:	20000 samples/second
--------------	----------------------